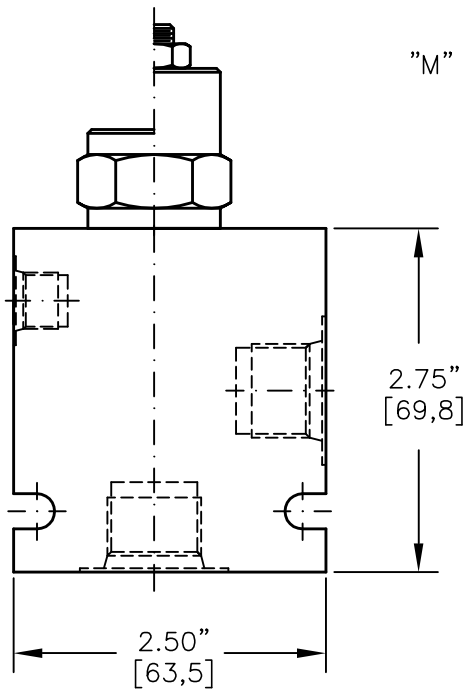
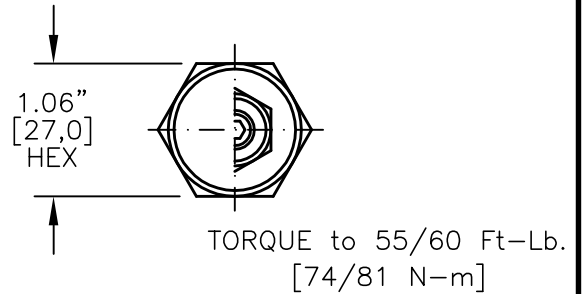
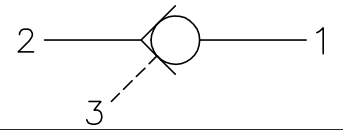
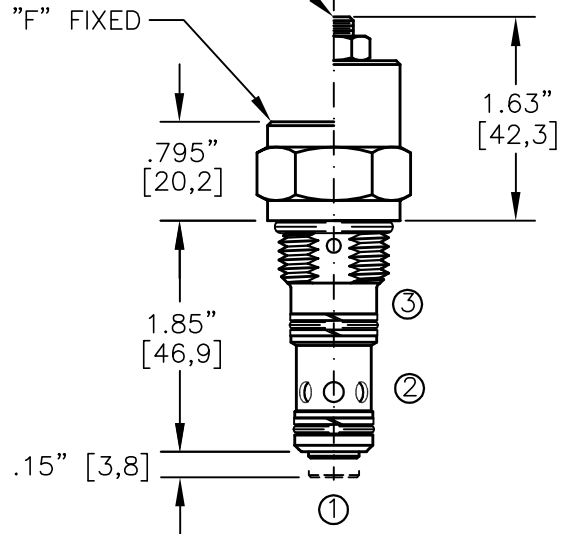




PILOT OPERATED CHECK VALVE POPPET TYPE, PILOT TO OPEN, 3 TO 1 PILOT RATIO.



"M" MANUAL LOAD RELEASE
1/2" [12,7] HEX



NOTE: CAVITY BOTTOM HOLE MUST ALLOW FOR POPPET EXTENSIONS (.563 DIA.)
FOR ALUMINUM OR STEEL VALVE HOUSING CONFIGURATIONS SEE PAGE 0-022-1.

POCI-10-X-X-X-XXX

BASIC _____
 SIZE _____
 10 = 7/8"-14 UNF

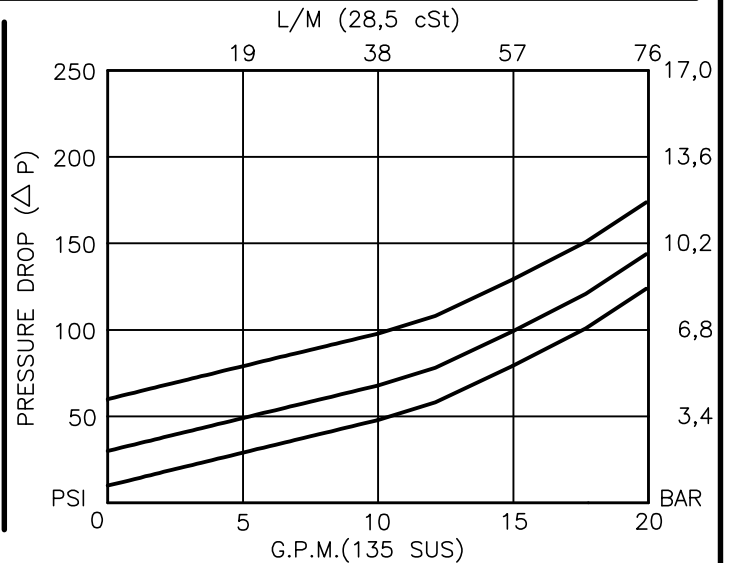
SEALS _____
 N = BUNA "N"
 V = VITON

ADJUSTMENT _____
 F = FIXED
 M = MANUAL RELEASE

CRACK PRESSURE
 010 = 10 PSI
 030 = 30 PSI
 060 = 60 PSI

PORTS
 0 = CARTRIDGE ONLY
 02BX = G 1/4" BSPP
 03BX = G 3/8" BSPP
 06TX = SAE - #6
 08TX = SAE - #8

"A" - ALUM. HOUSING
 "S" - STEEL HOUSING





PILOT OPERATED CHECK VALVE

POPPET TYPE, PILOT TO OPEN, 3 TO 1 PILOT RATIO.

DESCRIPTION

This unit is a SCREW IN, cartridge type, guided poppet, hydraulic pilot operated check valve, for use as a blocking or load holding device for high pressure applications.

OPERATIONS

This valve allows free flow from port 2 to port 1 and blocks flow from port 1 to port 2 or holding a load. Flow will be allowed from port 1 to port 2 when pressure is applied to port 3. This pilot operated check valve has a 3 to 1 pilot ratio, meaning that it takes at least one-third of the load pressure held at port 1 that is required at port 3 to open the valve.

FEATURES AND BENEFITS

A low friction seal on pilot piston is standard.
A separate heavy spring assures fast return of the pilot piston for a very quick, reliable and positive valve re-seat.
Optional screw type manual load release is available.
All external carbon steel parts are plated for longer life against the elements.
All cartridge valves are 100% functionally tested.
Industry common cavity.

SPECIFICATIONS

OPERATING PRESSURE: 5,000 PSI [350 Bar]

PROOF PRESSURE: 10,000 PSI [700 Bar]

FLOW: 18.0 GPM [70 l/m] nominal. See performance chart.

PILOT RATIO: 3 TO 1

INTERNAL LEAKAGE: 5 drops per minute maximum @ 5,000 PSI [350 Bar]

VALVE HOUSINGS: 2500 PSI [175 Bar] = Aluminum - Anodized.

5000 PSI [350 Bar] = Steel - Unplated.

OPERATING TEMPERATURE: -40° to +250° F. [-40° to +120° C.]

OPERATING MEDIA: All general purpose hydraulic fluids such as MIL-H-5606, SAE-#10, SAE-#20, etc.

INSTALLATION: No restrictions.

SEAL KIT: SKN-1028 Buna "N"

SKV-1028 Viton

WEIGHT: .39 lb [.18 kg] cartridge only.

VALVE CAVITY: #C1025, See Page 0-022.0.